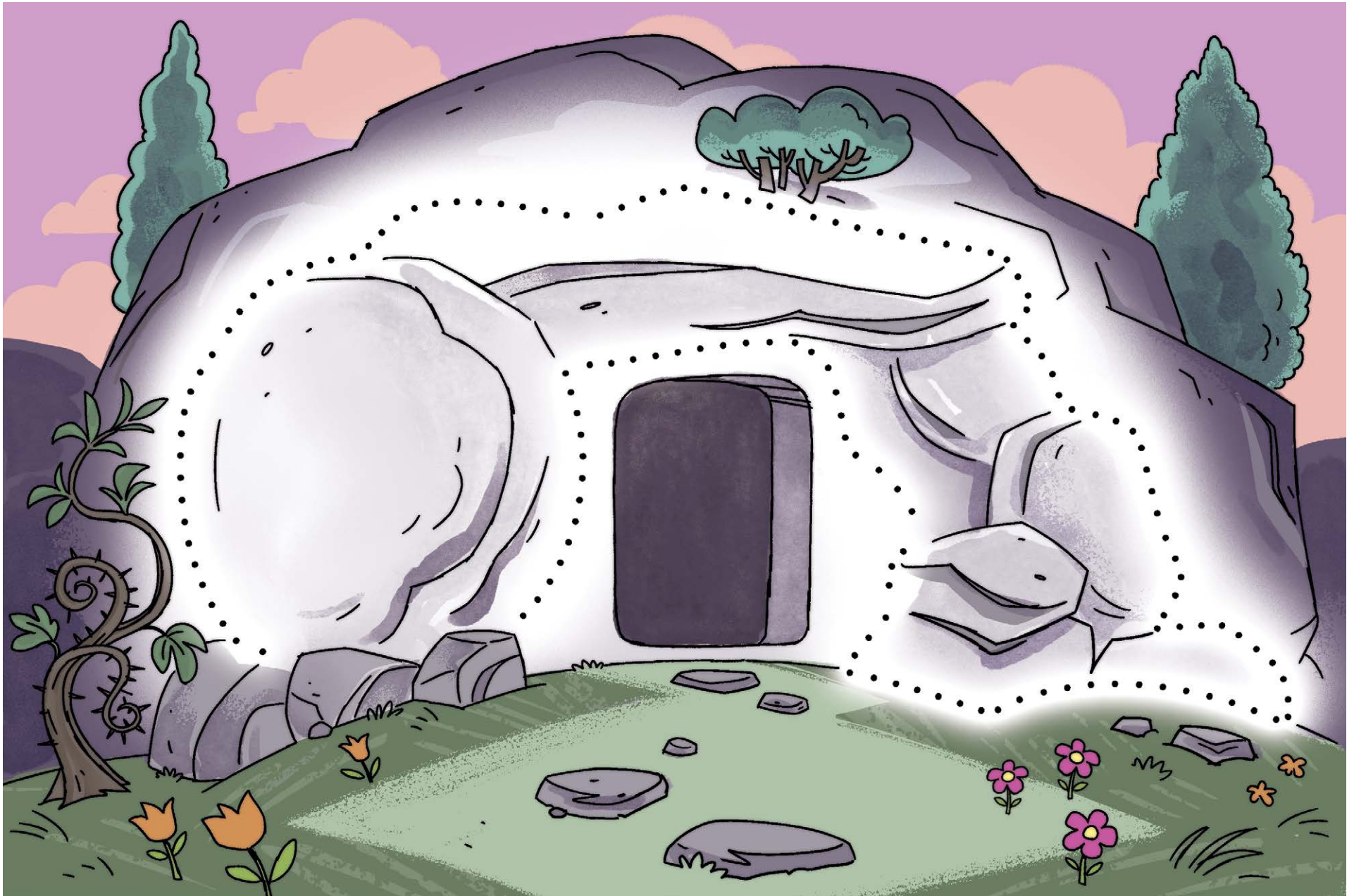


The Tomb Is Empty

INSTRUCTIONS: Connect the dots to discover that the tomb is empty because Jesus is alive!



NAME: _____



Jesus Saves Us to Follow Him

Matthew 27-28; Mark 15-16;
Luke 23-24; John 19-20

STORY POINT:

Jesus rose from the dead and is alive.

CHRIST CONNECTION:

Jesus came to earth to rescue sinners by dying on the cross. Jesus rose from the dead and is alive! Everyone who repents and trusts in Jesus is His follower and is welcomed into God's family forever.

KEY PASSAGE:

John 3:16

BIG PICTURE QUESTION:

Who is Jesus? Jesus is the Son of God who came to earth to save us.

Scan the QR code
for resources to
use at home!

